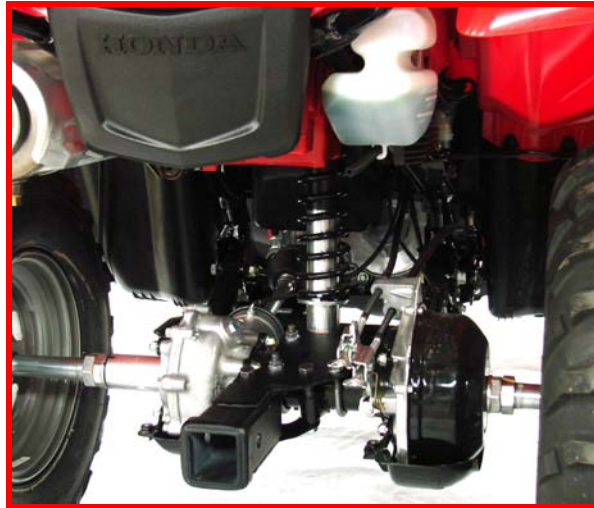




85155 – Honda Rancher 2” Receiver Hitch

Description	Quantity
Rancher Hitch Weldment	1
3/8” Bushing	2
3/8” x 3.00” x 3.50” U-Bolt	2
3/8” x 3.50” Hex Head Bolt	2
3/8” I.D. Washer	8
3/8” Nylock Nut	6
5/8” x 3.00” Bent Hitch Pin	1
R-Pin	1



Hitch Mounting:

1. Remove the OEM Stock Hitch from the ATV.

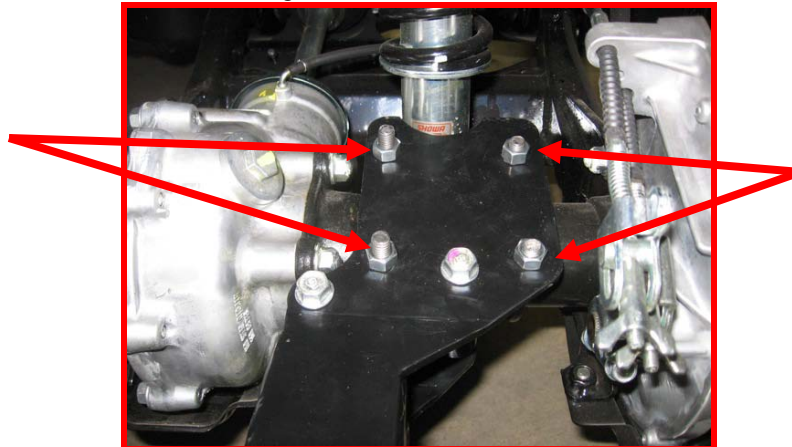




2. Mount the Kolpin Rancher Hitch using the same holes that the OEM bolts were just removed from. Use the 3/8" Hex Head Bolts by going through the Kolpin Hitch, then through the bushings supplied, into the holes on the ATV, and then back out the bottom of the Kolpin Hitch.



3. Do Not Tighten Yet!
4. Place one of the 2 U-Bolts through the Left side of the Hitch as shown.
5. Place the other U-Bolt on the Right side of the Hitch.



6. Now tighten all hardware securely.
7. Place Bent Hitch Pin through Hitch Tube and secure by clipping the R-Clip through the hole on the bent hitch pin.

Hitch Use:

- The 2" Receiver hitch is designed to allow you to quickly and easily mount and dismount the DirtWorks 3-Point Hitch system.
- Kolpin recommends the use of the DirtWorks Suspension Lock with the use of the DirtWorks system.
- The hitch can also be used for chores around the house, such as moving your boats, trailers, etc.

Hitch Compatible With:

1. **Honda Rancher 350 and 420**

Kolpin Outdoors, Inc.
205 N. Depot St, Fox Lake, WI 53933
Phone #: (877) 9KOLPIN or (920) 928-3118
www.kolpin.com
customerservice@kolpin.com