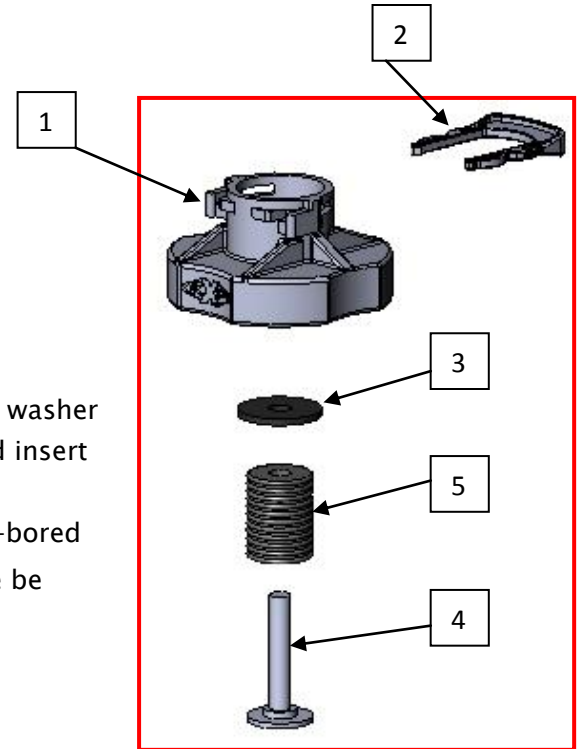




97205 – KXP ATV MIRROR

ITEM	DESCRIPTION	QTY
1	KXP PLASTIC BASE	1
2	KWIK CLIP	1
3	PLASTIC WASHER	1
4	5/16" THREADED ROD	1
5	RUBBER EXPANDER*	1
7	MIRROR ASSEMBLY	1
8	10mm LOCK WASHER	1
9	10mm NUT	1



MOUNTING INSTRUCTIONS:

1. Place the rubber expander on the threaded rod. Place the nylon washer on top of the rubber expander and thread the rod into the threaded insert in the bottom of the base.

* NOTE: the rubber expander for all systems has a counter-bored relief that faces the washer side of the **threaded rod**. Please be sure to install correctly!

2. Place the expander in the Lock & Ride hole and twist the base clockwise. As you twist the threaded rod will compress the rubber expander and secures the grip to your Sportsman ATV Rack. To remove, twist the base counterclockwise.

3. Next, insert the mirror assembly completely into the KXP Base making sure the splines engage and secure with the KWIK Clip.

4. To remove, pull the KWIK Clip and lift the mirror from the base.

NOTE: Fine adjustment can be achieved by loosening the jam nut on the rod of the mirror and swiveling the mirror to desired location and

Kolpin now offers many accessory options for Polaris ATV and UTV models. For a complete listing of these KXP accessories and Kolpin's KXP Plungers that are compatible with Polaris® Lock & Ride® System, be sure to check out www.kolpin.com, as new items will be coming soon.