

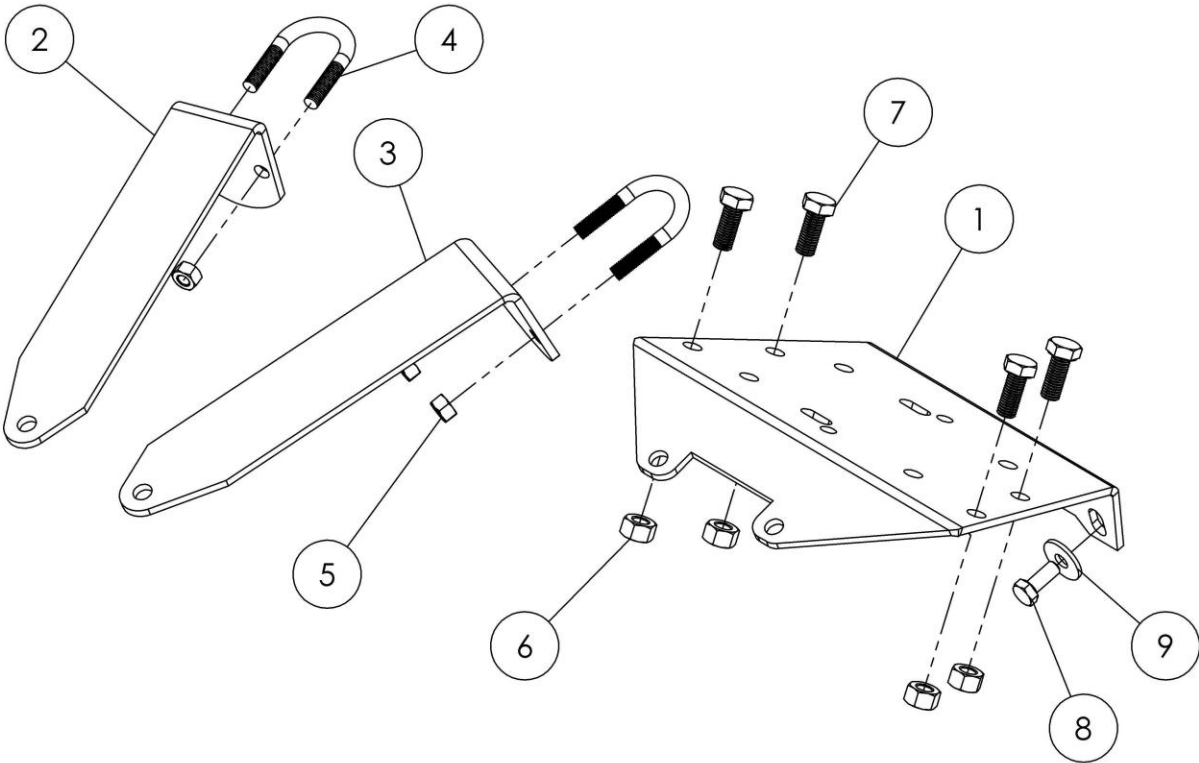


**WINCH
MOUNT KIT
For YAMAHA ATVs**

OWNER'S MANUAL

MODEL NUMBER: 25-5171

**CUSTOMER MUST RECEIVE A COPY OF THIS
OWNER'S MANUAL AT TIME OF SALE**



Model Number 25-5171 Parts List

ITEM NO.	QTY.	PART NO.	DESCRIPTION
1	1	CYC3608	Winch Mount Plate
2	1	CYC3609	Right Hawse Bracket
3	1	CYC3610	Left Hawse Bracket
4	2	PUR3190	U-bolt 8mm x 30mm x 50mm
5	4	PUR3068	Nylon Lock Nut M8
6	4	PUR3069	Nylon Lock Nut M10
7	4	PUR3023	Metric Bolt 10 x 25mm
8	2	PUR3011	Metric Bolt 8 x 20mm
9	2	PUR3087	Flat Washer 8mm

Hardware Package CYC5754

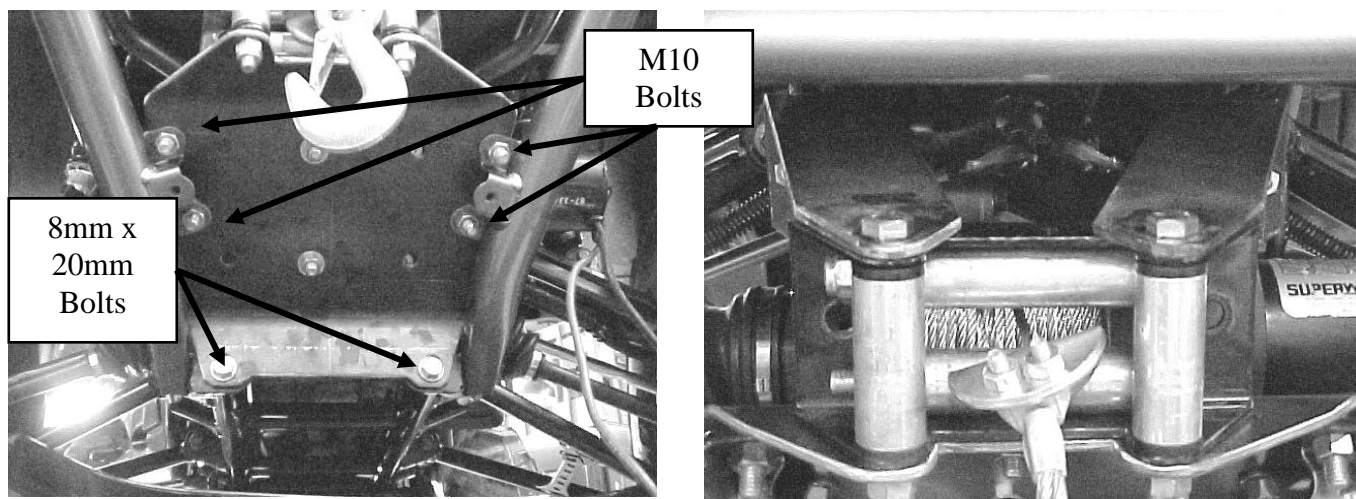
THIS WINCH MOUNTING KIT CAN BE USED TO MOUNT EITHER A CYCLE COUNTRY 1500/2500/3000 WINCH OR A WARN 2000/2500 WINCH.

All directions referring to right and left are when the rider is sitting on the machine. Please Note: The cable clamp, roller hawse, and cable stop are included with the winch.

MODEL NUMBER 25-5171 WINCH MOUNT INSTALLATION INSTRUCTIONS

ANY PARTS SHOWN UNPAINTED IN PICTURES ARE FOR INCREASED CONTRAST AND VISIBILITY OF INSTRUCTIONS

1. Remove the front brush guard. Retain bolts and brush guard for use when winch is not installed.
2. Position the winch mount plate as shown in picture below and as in the parts list. Attach the bottom to the frame with the two 8mm x 20mm bolts and flatwashers. Secure the front of the winch mount plate using the four M10 bolts and nylock nuts provided to the mounting brackets on the frame. **Tighten all bolts and nuts at this time.**



3. Attach the roller hawse mount brackets to the frame using U-bolts. Do not tighten at this time. Go to instructions for your Winch.

CYCLE COUNTRY 1500 WINCH MOUNTING INSTRUCTIONS

Using the two M8 x 25mm bolts, mount the winch to the winch mount plate. Be sure that when the winch is mounted on the winch mount plate, the winch motor is on the **LEFT** side of the machine. GO TO INSTRUCTION #4.

CYCLE COUNTRY 2500 WINCH MOUNTING INSTRUCTIONS

Using the four bolts PROVIDED WITH THE CYCLE COUNTRY WINCH, mount the winch to the winch mount plate. Be sure that when the winch is mounted on the winch mount plate, the winch motor is to the **RIGHT** side of the machine. GO TO INSTRUCTION #4.

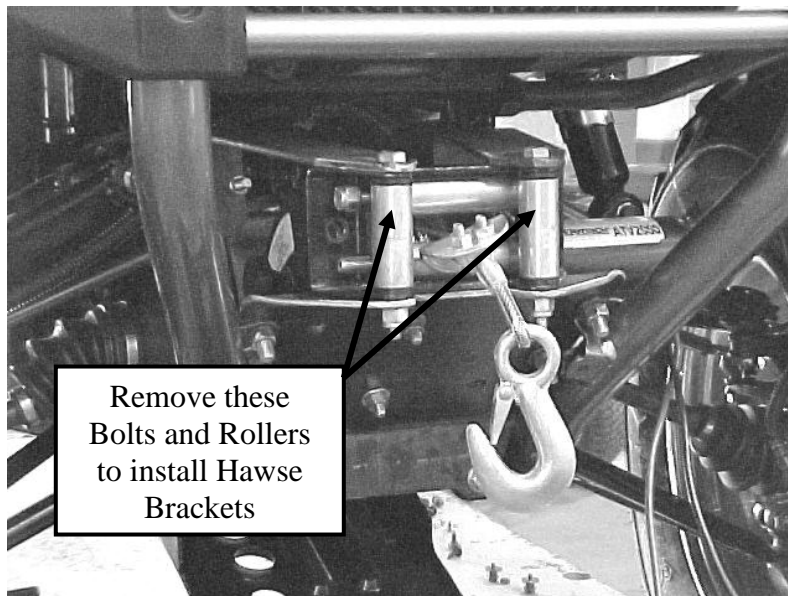
CYCLE COUNTRY 3000 WINCH MOUNTING INSTRUCTIONS

Using the two M8 x 25mm bolts, mount the winch to the winch mount plate. Be sure that when the winch is mounted on the winch mount plate, the winch motor is on the **RIGHT** side of the machine. GO TO INSTRUCTION #4.

WARN 2000/2500 WINCH MOUNTING INSTRUCTIONS

Using the four bolts PROVIDED WITH THE WARN WINCH, mount the winch to the winch mount plate. Be sure that when the winch is mounted on the winch mount plate, the winch motor is to the **RIGHT** side of the machine. GO TO INSTRUCTION #4.

4. Remove the two 3/8" bolts, nuts and short rollers (*vertical...shown in picture below*) from the roller hawse.



5. Set the roller hawse on top of the winch mount plate. Remove one of the long rollers and feed the winch cable through the opening. Reinstall the long roller.
6. Attach the roller hawse mount brackets to the top of the roller hawse using the existing roller hawse bolts, down through the bottom of the roller hawse and winch mount plate and secure with the nylock nuts. *Shown in picture above*. NOTE: right and left hawse brackets are not the same.

Securely tighten all Nuts and Bolts at this time.

See Winch Wiring Instructions supplied with the Winch for proper installation.



One Year Limited Warranty

For the period of one (1) year from the purchase date, Cycle Country (a Kolpin Powersports Brand) will replace for the original purchaser, free of charge, any part or parts found upon examination by Cycle Country to be defective in material, workmanship, or both.

All transportation costs incurred submitting product to Cycle Country for warranty consideration must be borne by the purchaser. If Cycle Country determines that the product must be returned to the factory for credit, please call 1-800-841-2222 for a Return Merchandise Authorization (RMA) number and shipping instructions.

This warranty does not apply to parts that have been damaged by accident, alteration, abuse, improper maintenance, normal wear, or other causes beyond the manufacturer's control. In order to protect you and your ATV, certain parts of the plow system and/or hardware are designed to fail when the equipment is over-stressed.

Peripheral products such as engines, electric motors, and actuators may carry an original manufacturer's warranty. Please call Cycle Country for more information.

Cycle Country

A Kolpin Powersports Brand

205 N Depot St

PO Box 107

Fox Lake, WI 53933

Service: 1-800-841-2222

Fax: 1-800-245-7569

Email: ccac@cyclecountry.com

Web: www.cyclecountry.com